

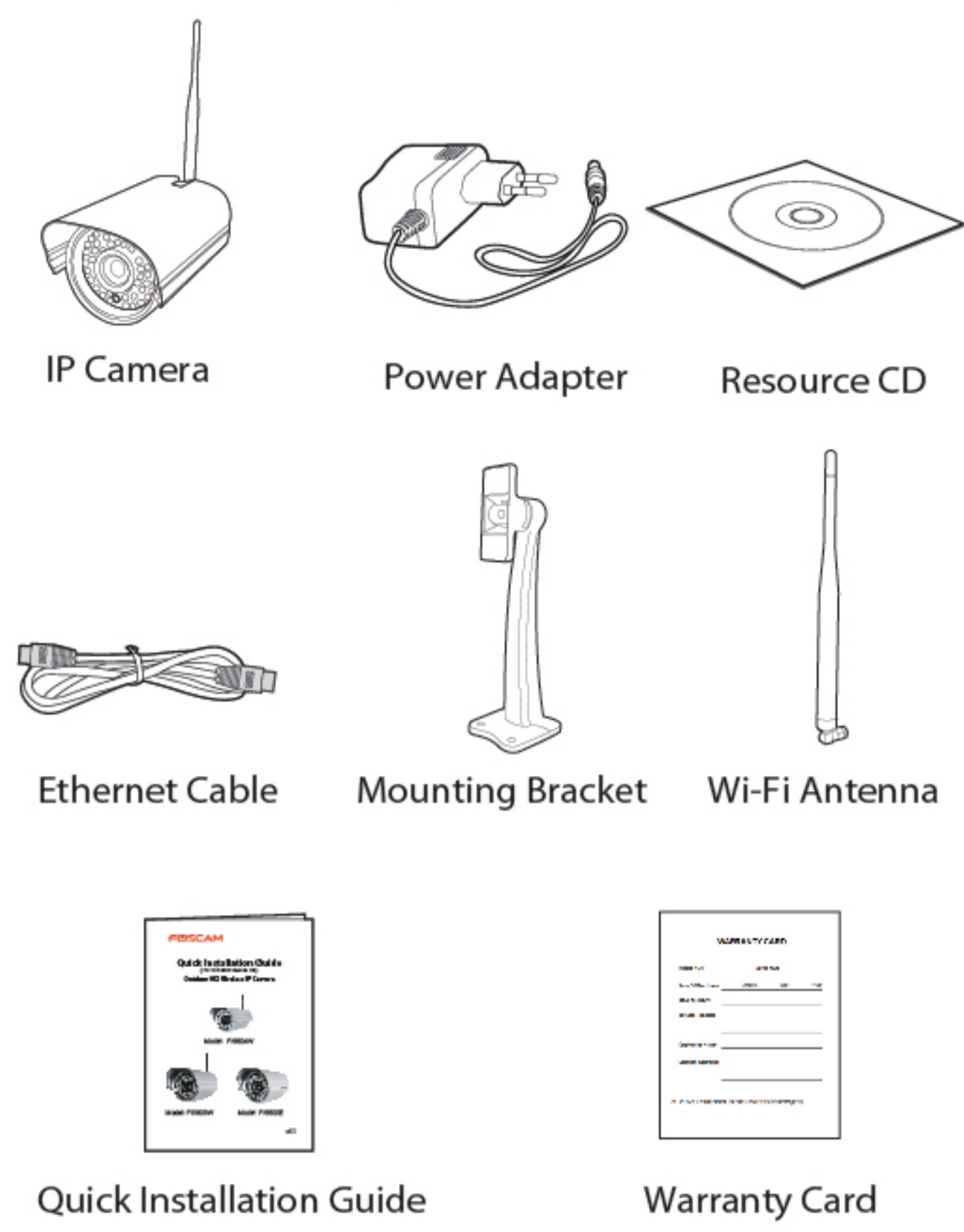
Quick Installation Guide

(For Windows & Mac OS)
Outdoor HD Wireless IP Camera



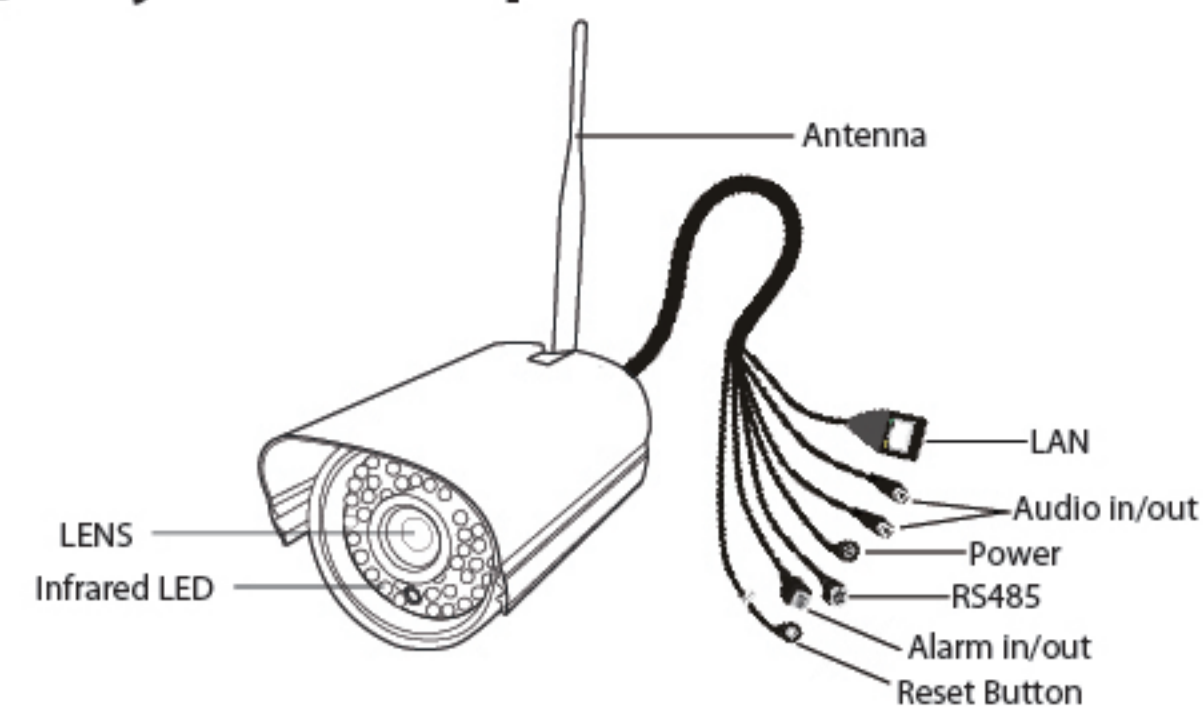
v4.1

Package Contents



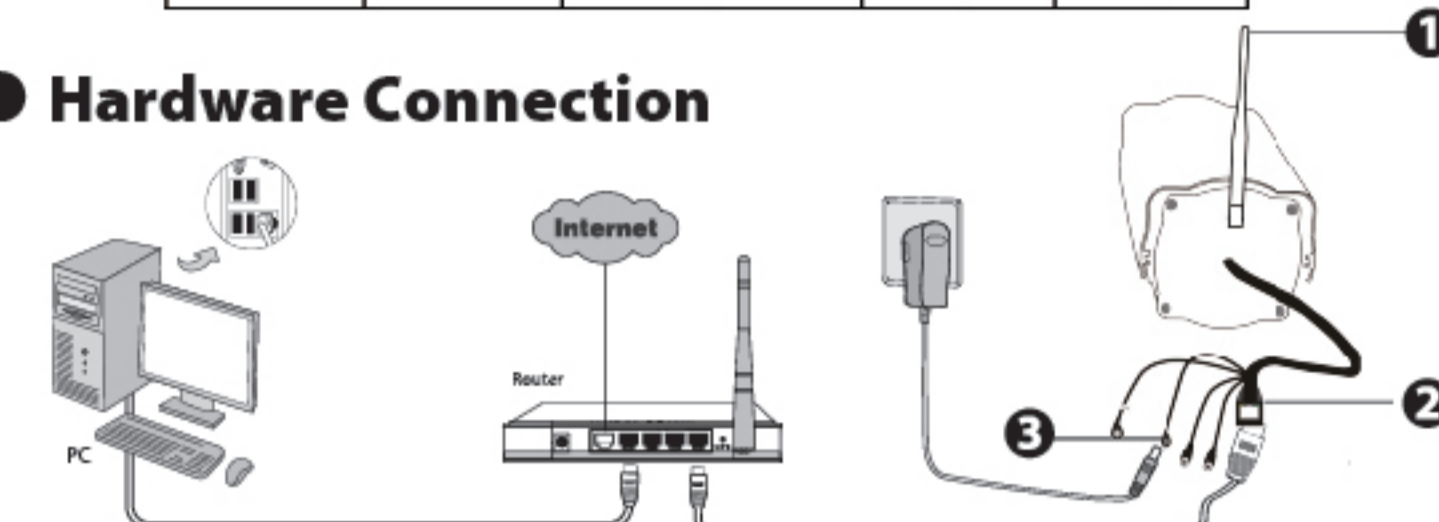
1 Hardware Introduction

Physical Description



Differences				
Model	Wireless	PoE(Power over Ethernet)	Alarm in/out	RS485
FI9804W	√	×	×	×
FI9805W	√	×	×	×
FI9805E	×	√	√	√

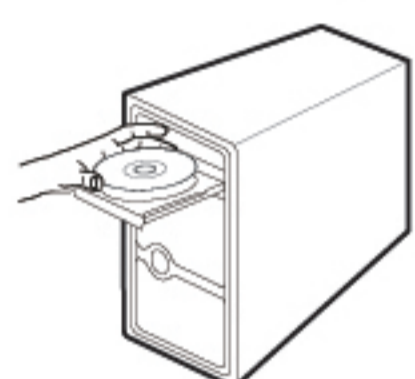
Hardware Connection



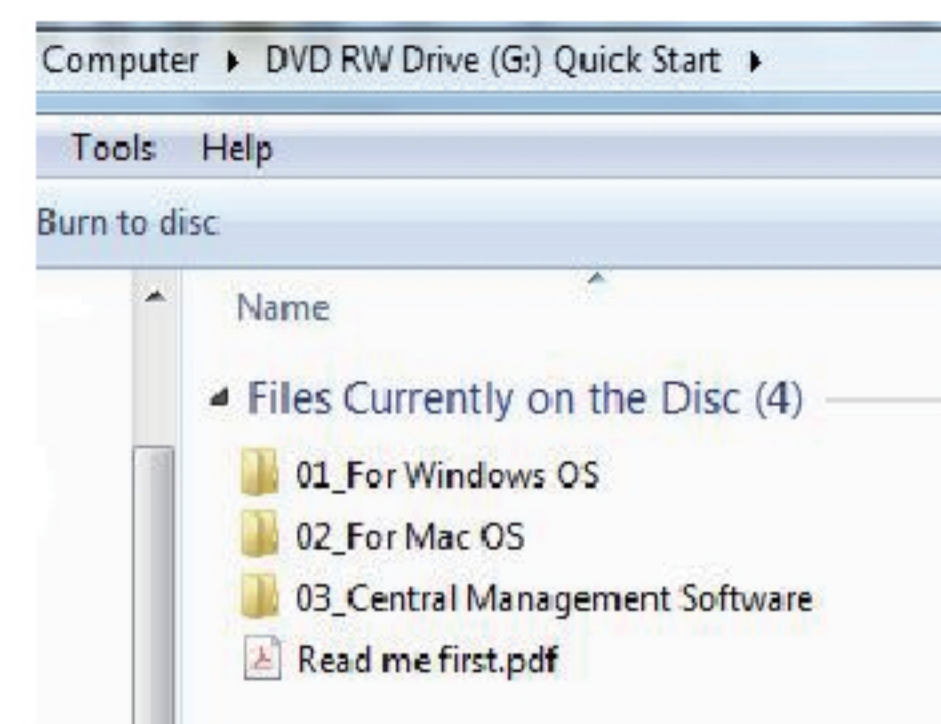
1. Mount the antenna and make it stand vertically.
2. Connect the camera to the LAN network (Router or Switch) via network cable.
3. Connect the power adapter to the camera.

2 Software Installation

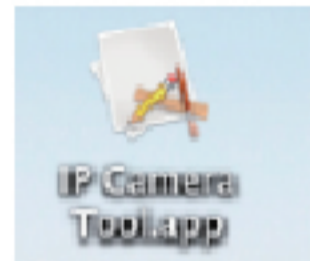
1. Insert the CD into the CD drive of your computer.



2. Go to the folder "For Windows OS" or "For Mac OS". Copy and paste the IP camera tool file to your computer, or drag it onto your Desktop.



Shortcut icon for Windows OS



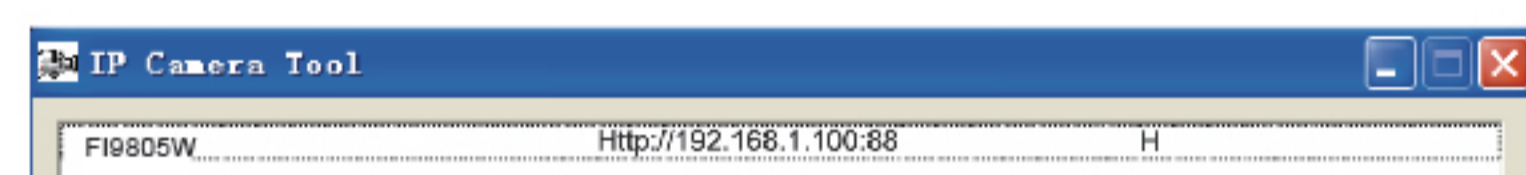
Shortcut icon for Mac OS

Note:

If your computer doesn't have CD drive, you can download the IP camera tool from our website for free.

3 Access the Camera

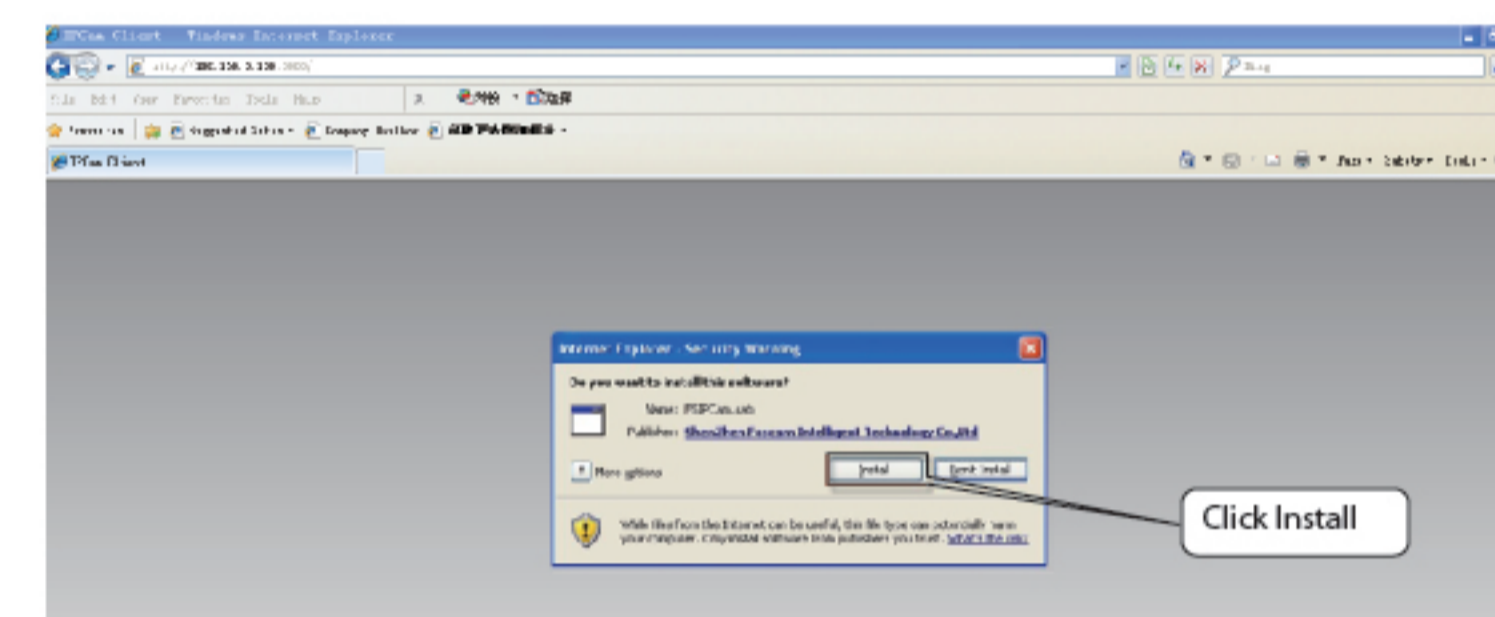
1. Enable the DHCP feature of your router (Enabled by default normally), then open the IP Camera Tool program. It should display the camera's IP address in your LAN (Local Area Network).



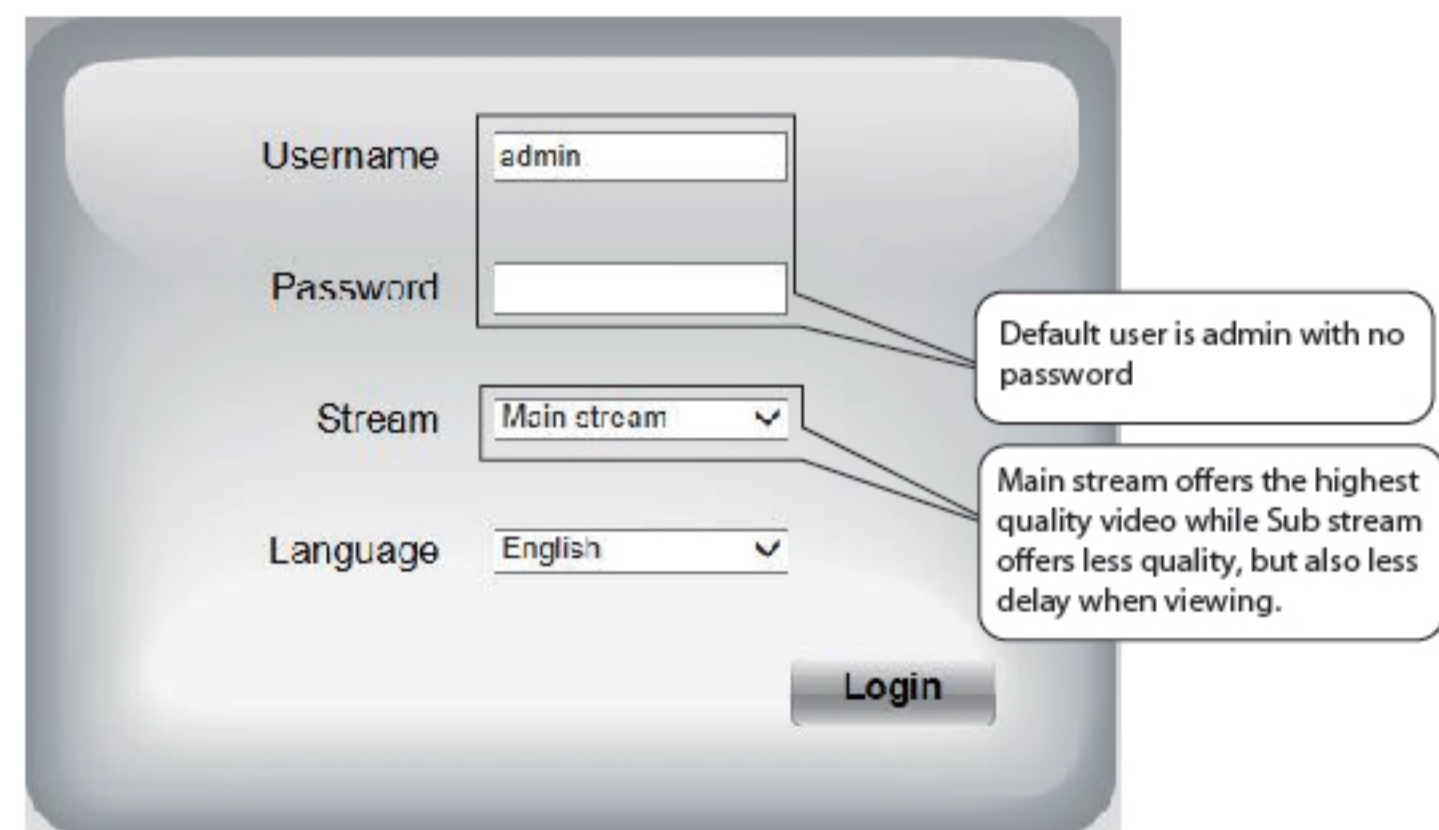
2. Double click the camera list here, and your default browser will open up to the camera's login page. When logging in for the first time, you will need to download and install the ActiveX add-on. Take Microsoft Internet Explorer as an example. For Google Chrome, Apple Safari, or Mozilla Firefox, please refer to the User Manual.

Note:

Doesn't support 64-bit browser.



3. After installing the ActiveX add-on, refresh the browser and click Login.



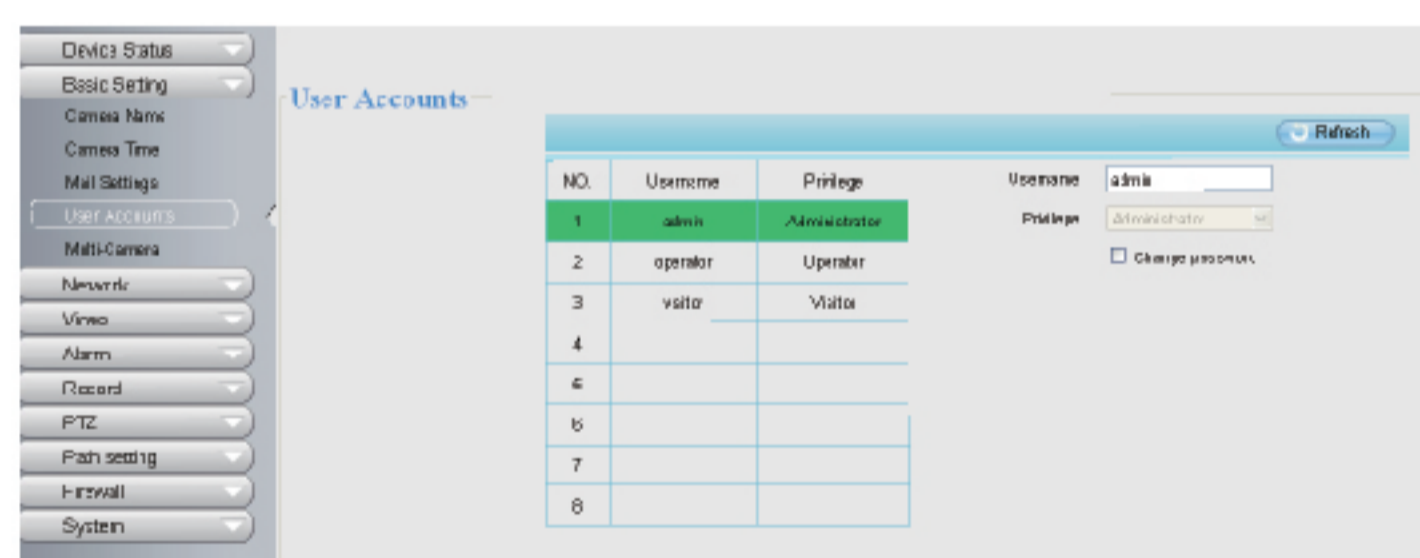
4. After logging in, you should see live video on the interface.



4 Security

We strongly recommend that you modify your password when you log in for the first time. To do this, choose "Settings" on the top of the camera interface, then go to the "Basic Settings - User Accounts" section on the left side of the screen.

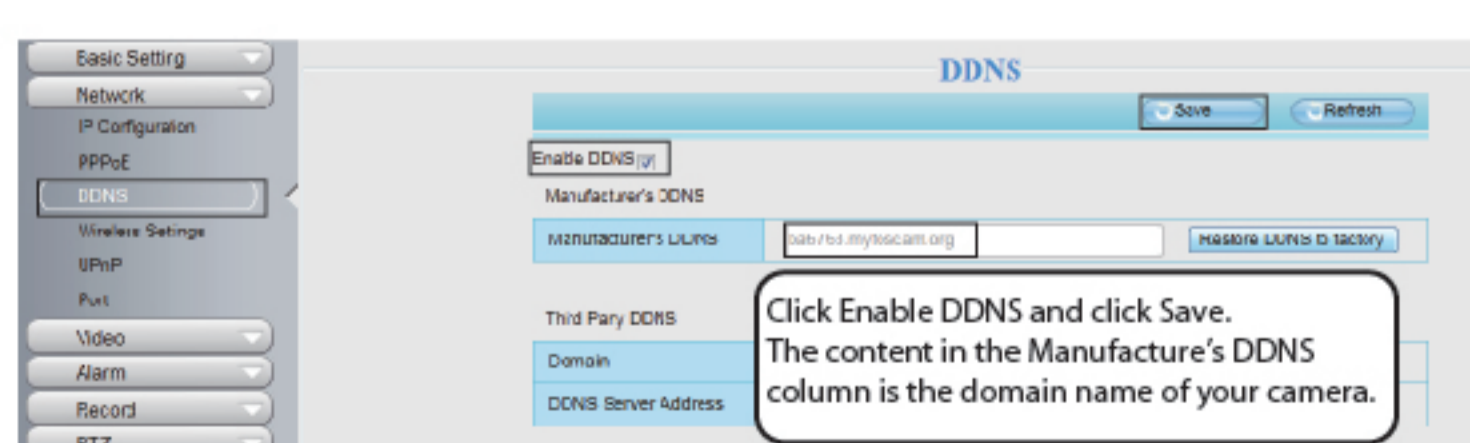
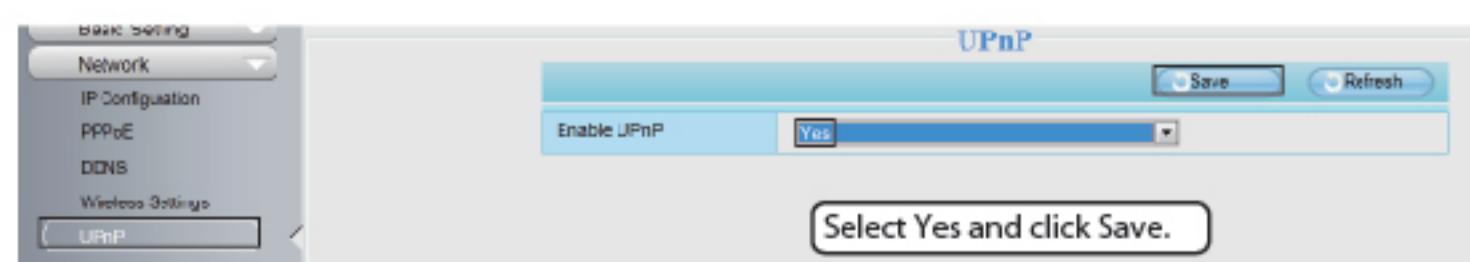
Here you can change the username and password to prevent intruders from accessing your camera. The default username is admin with no password.



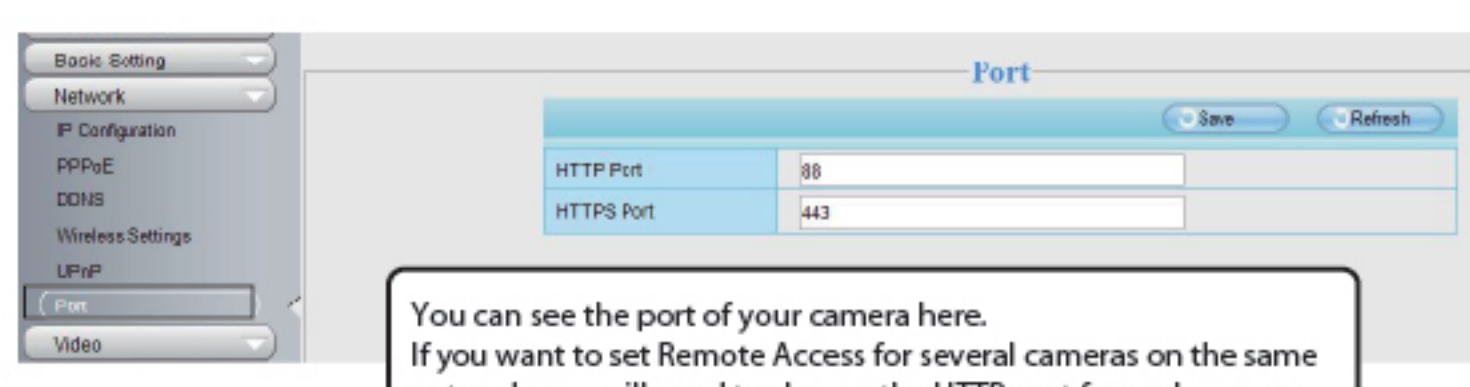
Note:

1. If you forget your username or password, you can press and hold the reset button on the cable of the camera using a pin for 5 seconds. This resets the camera to factory defaults.
2. If you want to access your camera over wireless or the Internet, please continue with the setup by following the Wireless and Remote Access steps below.

2. Enable UPnP and DDNS in the camera's settings page. We recommend you to use the Foscam DDNS by factory default, but if you want to use the third party DDNS, please check the user manual for further instructions.



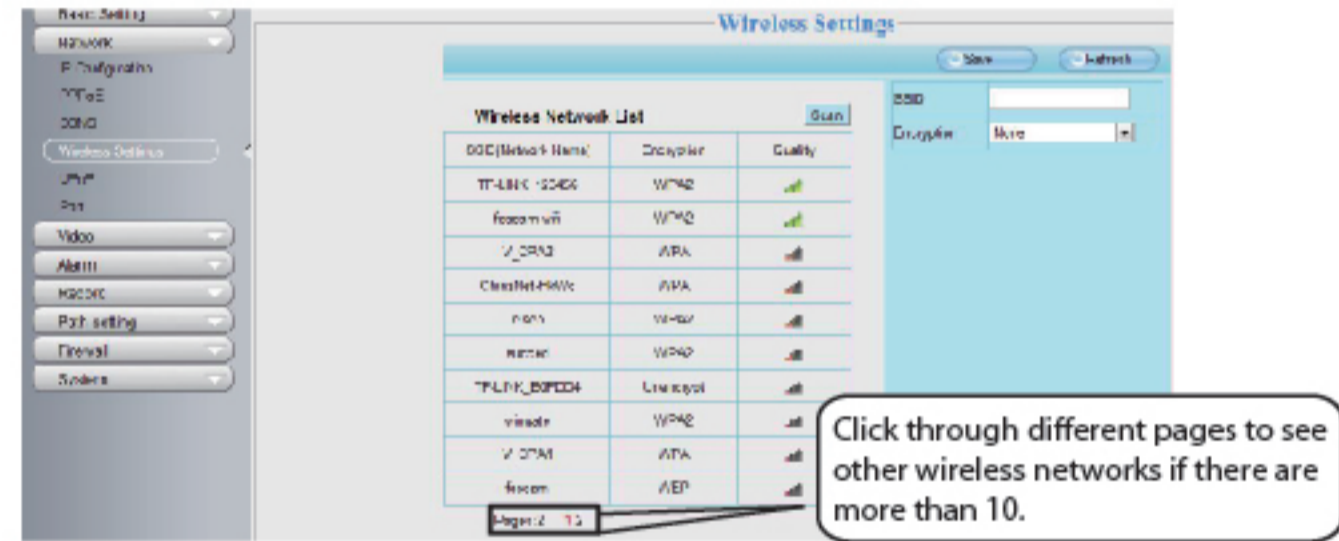
3. Configure port (HTTP port) forwarding on your router. For these steps, we will be using the TP-LINK brand wireless router as an example. First, we need to go to the "Forwarding - Virtual Servers" panel for setup. For other brands, you can check the user guide or user manual of the router, or consult the manufacturer.



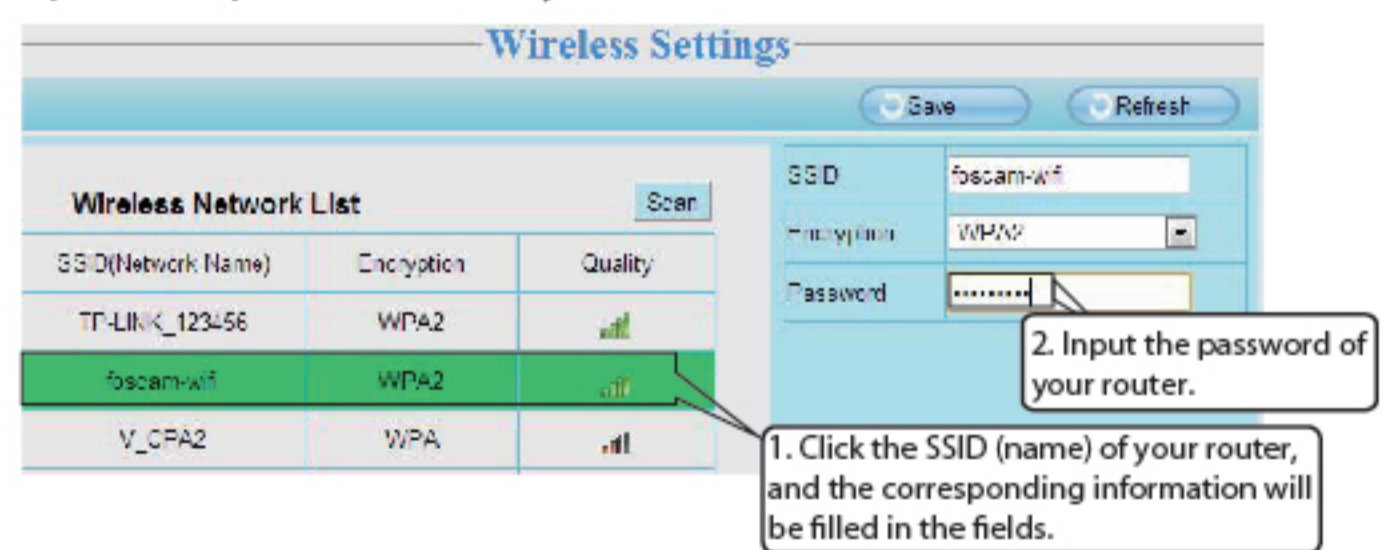
You can see the port of your camera here. If you want to set Remote Access for several cameras on the same network, you will need to change the HTTP port for each camera.

5 Wireless Connection

1. Choose "Settings" on the top of the camera page, then go to the "Network - Wireless Settings" section on the left side of the screen, then click "Scan".



2. Click the SSID (name of your router) in the list, and the corresponding SSID and encryption will be filled into the relevant fields automatically on the right side of the page. All you need to do is input the password for your wireless network.

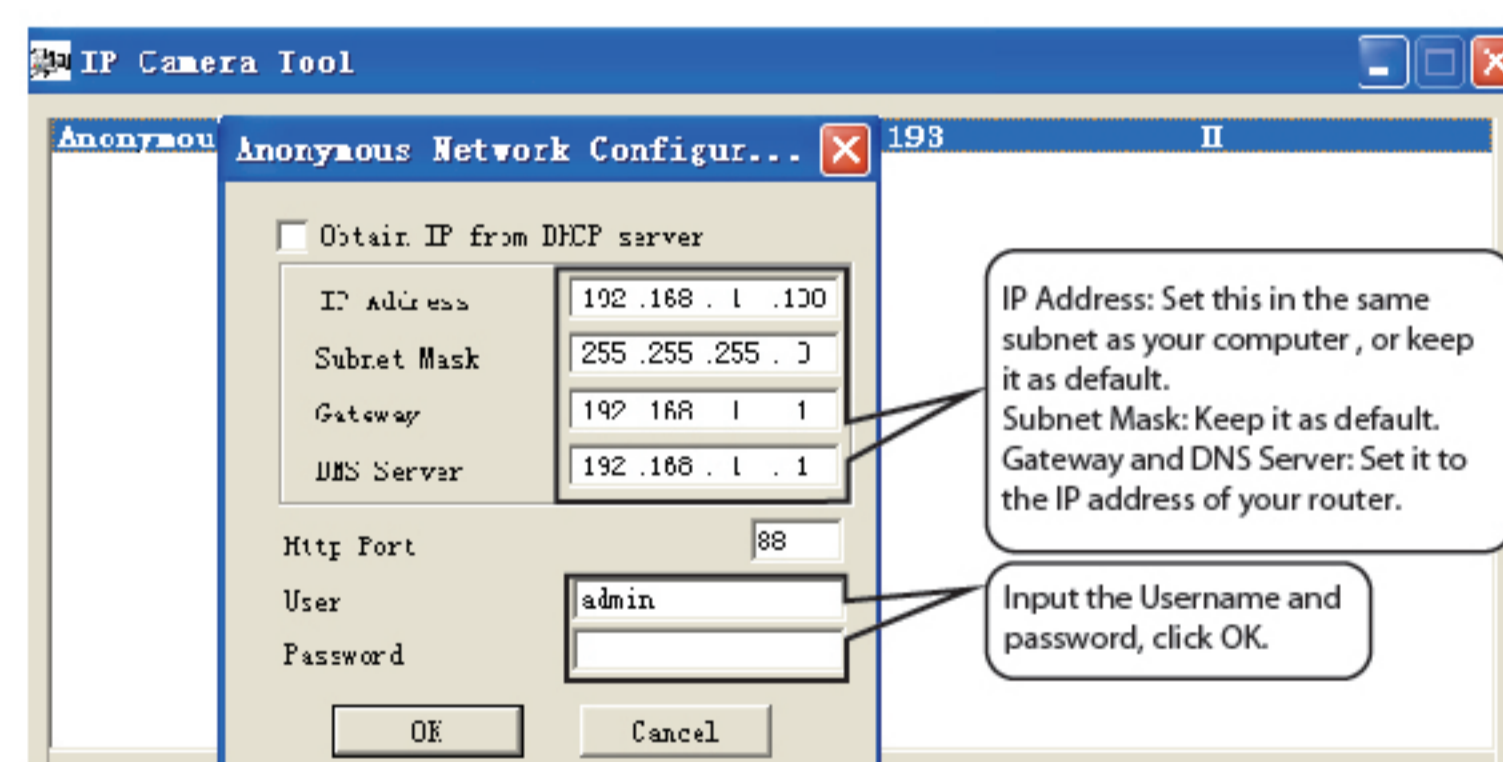
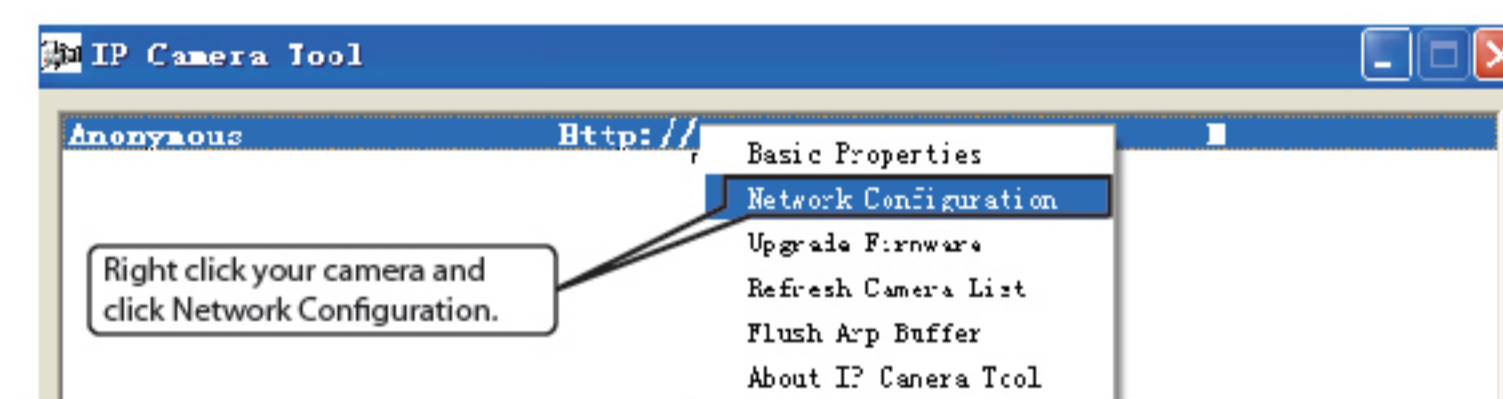


3. Click the Save button and disconnect the network cable. Don't power off the camera until it is able to show up in the IP Camera Tool. If the camera does not show up, try unplugging the power cord from the camera and plugging it back in. It should connect to the wireless network automatically.

6 Remote Access

If you need to access your IP camera outside of your LAN, you need to configure some settings on your router. Please follow the corresponding steps:

1. Run the IP Camera Tool, and assign an IP address for your camera.



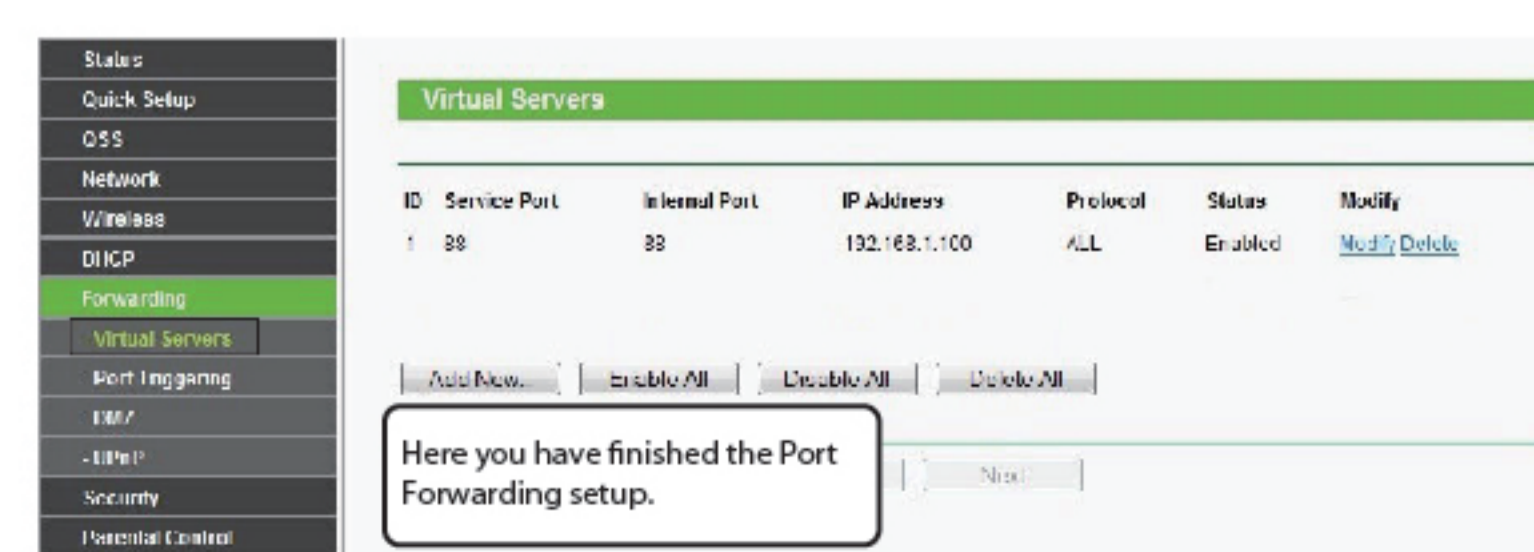
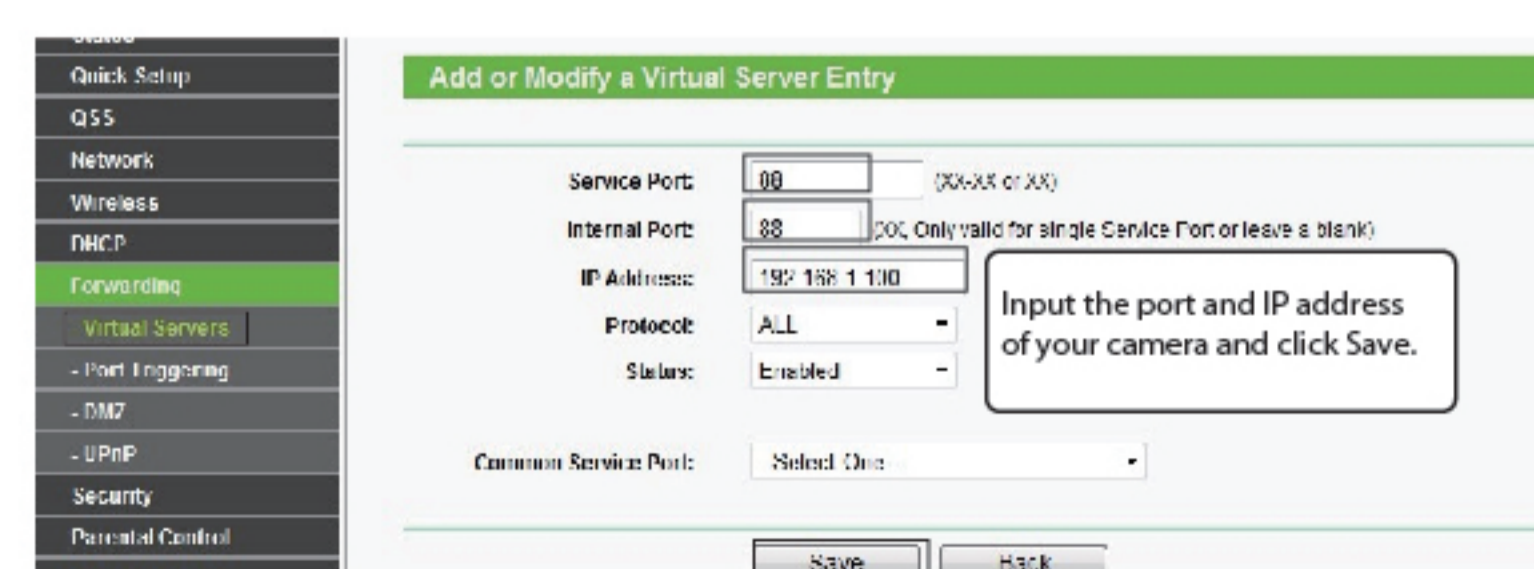
7 Technical Support

If you have problems with your Foscam IP camera, please contact the Foscam reseller you purchased from, or you can e-mail the Foscam headquarter technical support team: tech@foscam.com.

Your valuable comments and suggestions on improving Foscam products are welcomed!



ShenZhen Foscam Intelligent Technology Co., Ltd
www.foscam.com



4. Now you can access your IP camera by `http://domain name:HTTP port` via the Internet.